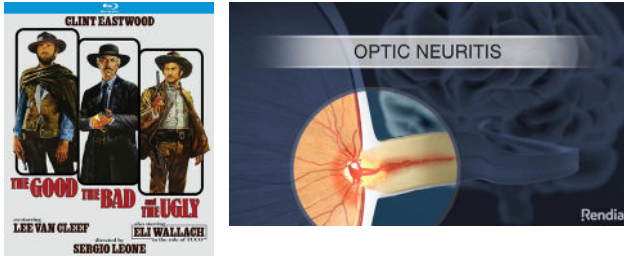
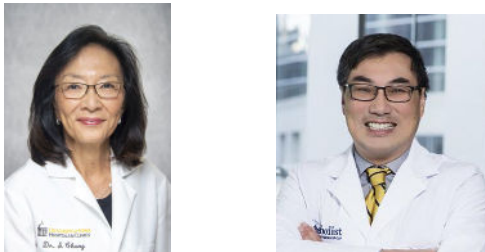


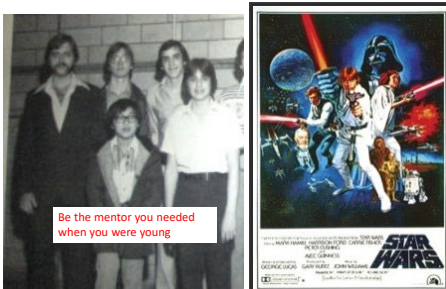
Idiopathic (“the good”); MS (“the bad”);
NMO/MOG (“the ugly”): Optic Neuritis



Your local friendly neuro-op panel for today



1978: I wanted to be a doctor...
2nd choice Jedi knight



I wanted to help people ...but I also wanted a superpower and also to be a spaceman

- It turns out superpowers are real
- The power to detect disease and death by looking in people's eyes
- A real Jedi superpower


The Jedi superpower: The force



I have no financial interest but I have a definite interest (in you)

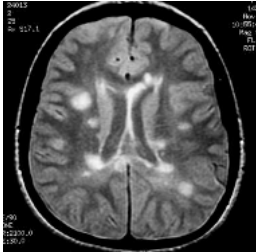


25 yo WF with acute unilateral loss of vision, RAPD OD, and normal fundus OU.



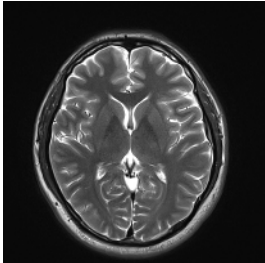
A fundus photograph of the right eye (OD) showing a normal fundus. The optic disc is visible on the right side of the image, and the retinal vessels are clearly seen. There is no evidence of optic neuritis or other pathology.

Typical MS optic neuritis (the bad)

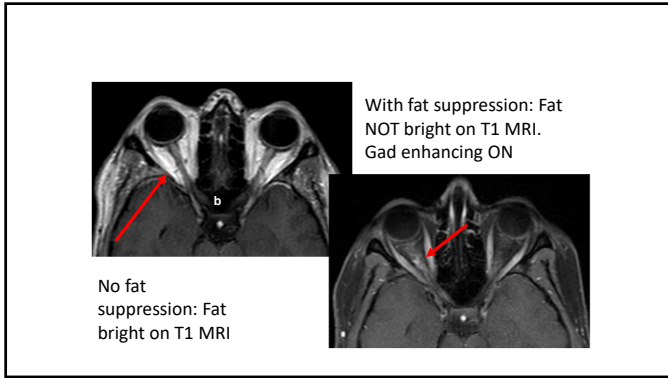


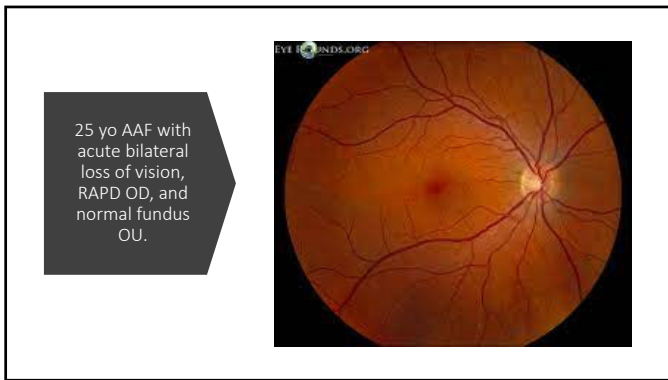
An axial MRI scan of the brain showing multiple white matter lesions, characteristic of multiple sclerosis. The lesions are visible as bright spots in the white matter, particularly in the periventricular regions.

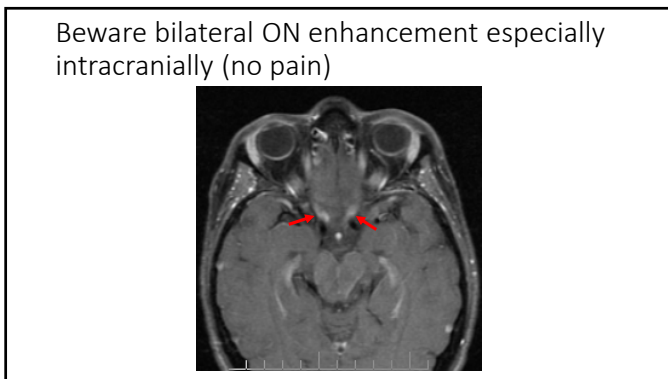
Good news: Your MRI was normal
Bad news: Your MRI was normal



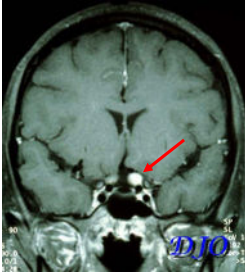
An axial MRI scan of the brain showing a normal fundus. The brain appears normal with no visible lesions or abnormalities.







Beware enhancing & enlarged ON



25 yo AAF with acute unilateral loss of vision, RAPD OD, and swollen ON OD.

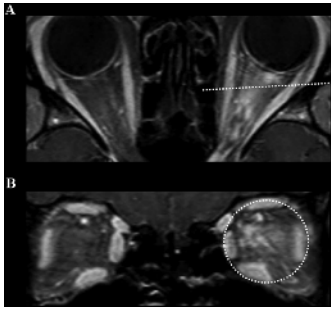


Beware enhancement outside of nerve itself....



http://rad.usuhs.edu/synapse/kiosk_image.html?

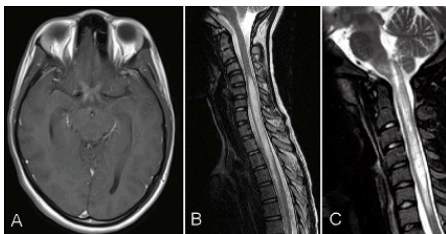
MRI sheath enhancement



Unilateral vs. Bilateral (adults) ON

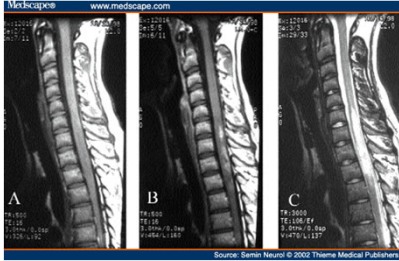


Longitudinally extensive lesions



https://www.researchgate.net/figure/Typical-imaging-findings-of-optic-neuritis-and-longitudinally-extensive-transverse_fig2_230616585

Longitudinally extensive TM (> 3 vertebral segments) vs. rare in MS



MAYO CLINIC
Mayo Medical Laboratories

MAYBE, but I do NOT

